

ENERVEX® SCA STEEL CHIMNEY ADAPTER

VOLKO SUPPLY

800-685-8263

020.2210.1220 12.20

Product Information

Use

The SCA steel chimney adapter is used when installing the RSV, RS, RSHT or GSV fan on the top of a single or double wall steel chimney.

Description

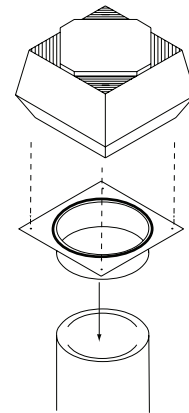
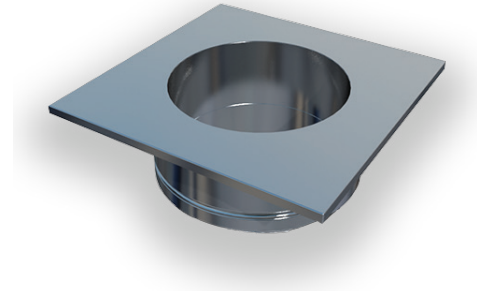
The adapter is designed to slide into the steel chimney for a tight fit. The outer diameter of the collar is 1/8" smaller than the inner diameter of the steel chimney, and has a 5" deep collar.

Material

The steel chimney adapter is made of 16GA, 316 stainless steel.

Warranty

2-Year Factory Warranty. Complete warranty conditions are available from ENERVEX Inc.



Specifications are subject to change without notice.

ENERVEX Inc.
1685 Bluegrass Lakes Parkway
Alpharetta, GA 30004
USA

P: 770.587.3238
F: 770.587.4731
T: 800.255.2923
info@enervex.com
www.enervex.com

ENERVEX® 
VENTING DESIGN SOLUTIONS

ENERVEX®

SCA STEEL CHIMNEY ADAPTER

020.2210.1220 12.20

Product Information

Specifications

Fan Type	Flange Dimension	VENT Diameter							
		4"	5"	6"	7"	8"	9"	10"	12"
RSV 009, GSV 009	9.4" x 9.4" (240 x 240 mm)	221.0300.1004	221.0300.1005	221.0300.1006	221.0300.1007	221.0300.1008			
		4"	5"	6"	7"	8"	9"	10"	
RSV 009, GSV 009	12.2" x 12.2" (310 x 310 mm)								221.0300.1010
RSV 012, GSV 012, RSV 200, GSV 200, RS 009		221.0300.2004	221.0300.2005	221.0300.2006	221.0300.2007	221.0300.2008	221.0300.2009	221.0300.2010	
		5"	6"	7"	8"	9"	10"	12"	
RSV 012, GSV 012, RSV 200, GSV 200, RS 009	15.6" x 15.6" (395 x 395 mm)								221.0300.2012*
RSV 014, GSV 014, RSV 250, GSV 250, RS 012, RS 014,		221.0300.3005	221.0300.3006	221.0300.3007	221.0300.3008	221.0300.3009	221.0300.3010	221.0300.3012	
		8"	10"	12"	14"				
RSV 014, GSV 014, RSV 250, GSV 250, RS 012, RS 014	19.7" x 19.7" (500 x 500 mm)				221.0300.3014				
RSV 016, GSV 016 RSV 315, GSV 315, RSV 400, GSV 400, RSV 450, GSV 450, RS 016		221.0300.4008	221.0300.4010	221.0300.4012	221.0300.4014				
		16"	18"						
RSV 014, GSV 014, RSV 250, GSV 250, RS 012, RS 014	22.1" x 22.1" (562 x 562 mm)	221.0300.3016	221.0300.3018						
RSV 016, GSV 016 RSV 315, GSV 315, RSV 400, GSV 400, RSV 450, GSV 450, RS 016		221.0300.4016	221.0300.4018						
		20"	22"	24"	26"				
RSV 016, GSV 016 RSV 315, GSV 315, RSV 400, GSV 400, RSV 450, GSV 450, RS 016	24.5" x 24.5" (622 x 622 mm)	221.0300.4020							
	26.5" x 26.5" (673 x 673 mm)		221.0300.4022						
	28.3" x 28.3" (718 x 718 mm)			221.0300.4024					
	30.3" x 30.3" (770 x 770 mm)				221.0300.4026				

*SCA has an over-sized flange

Specifications are subject to change without notice.

ENERVEX Inc.
1685 Bluegrass Lakes Parkway
Alpharetta, GA 30004
USA

P: 770.587.3238
F: 770.587.4731
T: 800.255.2923
info@enervex.com
www.enervex.com

ENERVEX® 
VENTING DESIGN SOLUTIONS